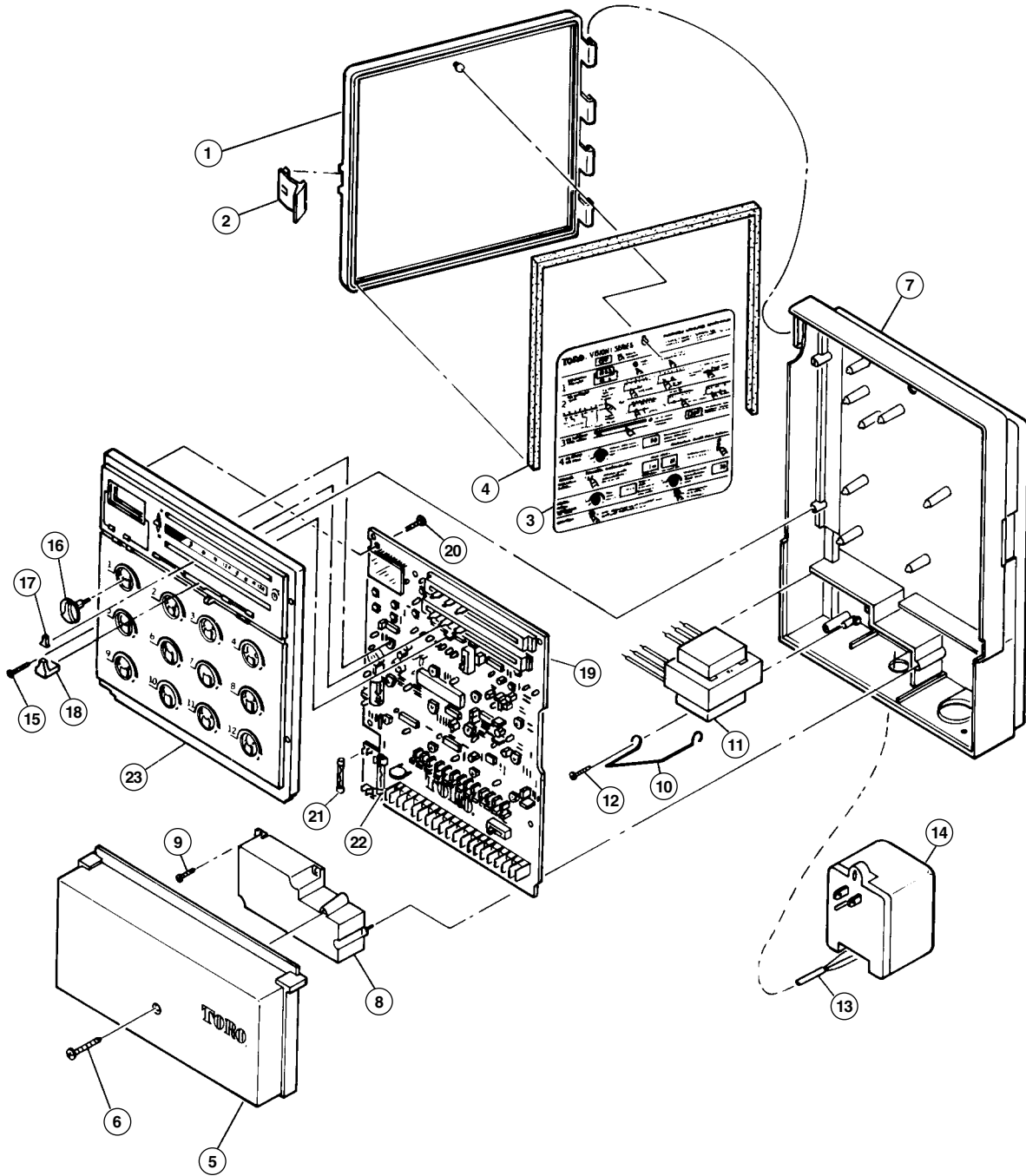
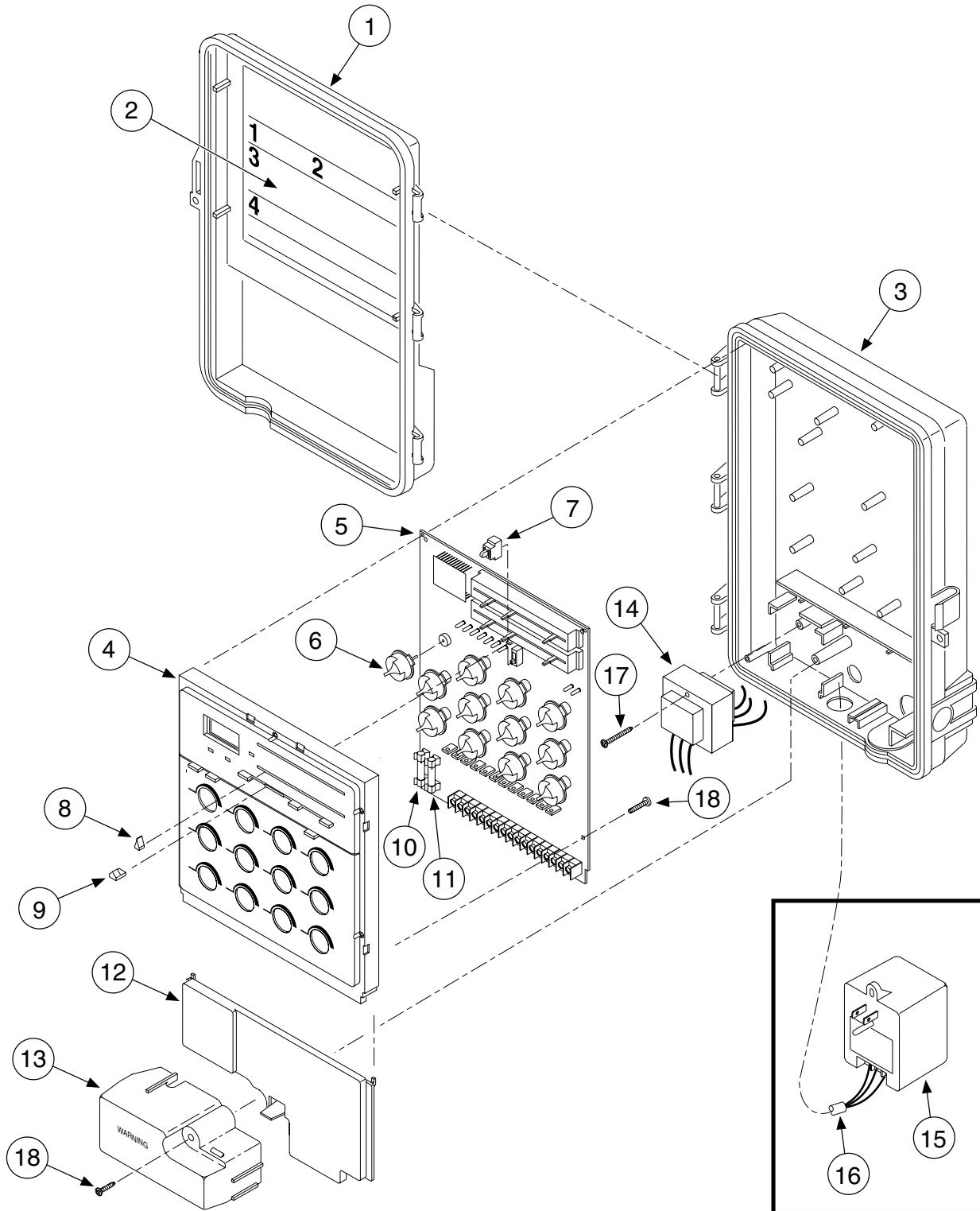


Vision II - Old-Style Plastic Cabinet



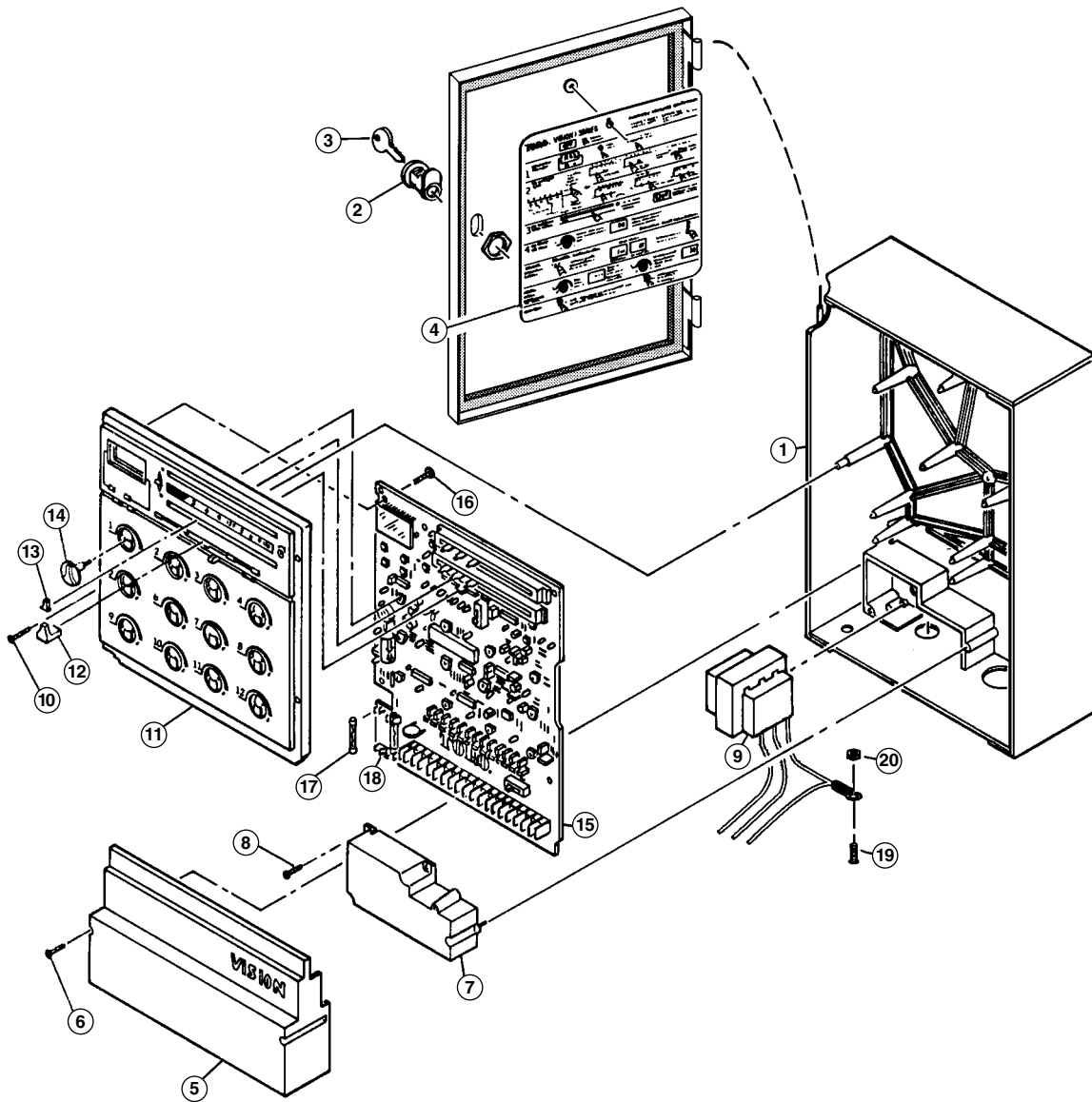
Item No.	Part No.	Description	Quantity Per Assy.
1	91-0052	Door, Plastic	1
2	91-0150	Latch, Door	1
3	91-0206	Card, Instruction	1
4	91-0416	Gasket, Door	1
5	91-0050	Cover, Terminal	1
6	363-1548	Screw, Tap, #6	1
7	91-0051	Housing, Controller	1
8	91-0053	Cover, Transformer	1
9	363-1355	Screw, Tap, #6	1
10	91-0228	Retainer, Transformer	1
11	35-9950	Transformer, 120 V a.c., 24 V a.c.,	1
11	35-9956	Transformer, 220/240 V a.c., 24 V a.c. (Export Models Only)	1
12	363-1355	Screw, Tap, #6	1
13	91-0188	Cable, Power Interconnect, Plug-In Models	1
14	35-9914	Transformer, Plug-In, 120 V a.c., 24 V a.c.	1
15	363-5052	Screw, 4-24 x 11/16"	5
16	91-0054	Knob, Station (One Per Station)	
17	89-0410	Knob, Slide Pot.	6
18	91-0056	Knob, Slide Pot.	1
19	-----	PCB Assy. (See Service Parts and Assemblies)	1
20	363-1355	Screw, Tap #6	4
21	360-0749	Fuse, 1.5 Amp	1
22	363-5026	Fuse, .75 Amp	1
23	-----	Plate, Front, 6, 9, and 12 Station (See Service Parts and Assemblies)	1
		SERVICE PARTS AND ASSEMBLIES	
	363-5078	Barrier Strip, 4 P, Input Power, Export	
	89-7050	Kit, Accessory, Vision II	
	89-9393	Timing Mechanism, 6 Station (Includes Items 16-23)	
	89-9394	Timing Mechanism, 9 Station (Includes Items 16-23)	
	89-9395	Timing Mechanism, 12 Station (Includes Items 16-23)	
	91-1362	Timing Mechanism, 6 Station, Export (Includes Items 16-23)	
	91-1363	PCB Assy., 6 Station, Export (Includes Items 19, 21 & 22)	
	91-1364	Timing Mechanism, 9 Station, Export (Includes Items 16-23)	
	91-1365	PCB Assy., 9 Station, Export (Includes Items 19, 21 & 22)	
	89-9395	Timing Mechanism, 12 Station, Export (Includes Items 16-23)	
	91-1367	PCB Assy., 12 Station, Export (Includes Items 19, 21 & 22)	

Vision II - New-Style Plastic Cabinet



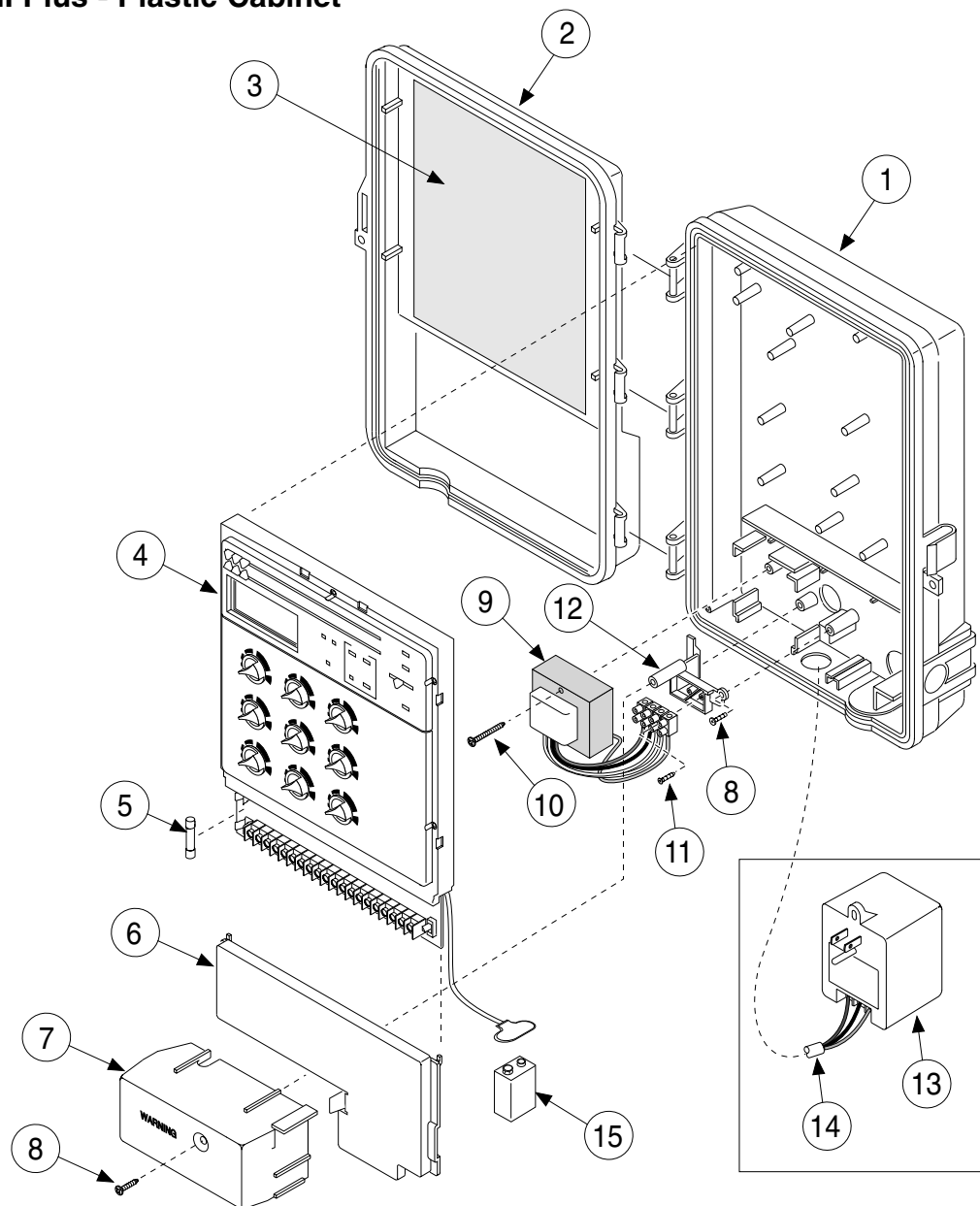
Item No.	Part No.	Description	Quantity Per Assy.
1	91-1327	Cover, Gray	1
2	91-0806	Decal, Instruction	1
3	91-1325	Housing, Gray	1
4	91-0972	Front Plate, 12 Station	1
4	91-0973	Front Plate, 9 Station	1
4	91-0974	Front Plate, 6 Station	1
5	-----	PCB Assy., 12 Station (See Service Parts and Assemblies)	1
5	-----	PCB Assy., 9 Station (See Service Parts and Assemblies)	1
5	-----	PCB Assy., 6 Station (See Service Parts and Assemblies)	1
6	91-0054	Knob, Station	1
7	-----	Extender, Slide Switch	1
8	91-0056	Knob, Slide	1
9	89-0410	Knob, Slide	1
10	360-0749	Fuse, 1.5 Amp	1
11	363-5026	Fuse, .75 Amp	1
12	91-1521	Cover, Terminal, Gray	1
13	91-1329	Cover, Transformer, Gray	1
14	35-9951	Transformer, 120 V a.c., 24 V a.c.	1
14	35-9957	Transformer, 220/240 V a.c., 24 V a.c. (Export Models Only)	1
15	35-9914	Transformer, Plug-In, 120 V a.c., 24 V a.c.	1
16	91-0188	Cable, Power, Interconnect, Plug-In Models	1
17	363-3195	Screw, Tap, #6 x 1.5"	1
18	363-1355	Screw, Tap, #6	1
		SERVICE PARTS AND ASSEMBLIES	
	363-5078	Barrier Strip, 4 P, Input Power, Export	
	89-7050	Kit, Accessory, Vision II	
	89-9393	Timing Mechanism, 6 Station (Includes Items 4–11)	
	89-9394	Timing Mechanism, 9 Station (Includes Items 4–11)	
	89-9395	Timing Mechanism, 12 Station (Includes Items 4–11)	
	91-1362	Timing Mechanism, 6 Station, Export (Includes Items 4–11)	
	91-1363	PCB Assy., 6 Station, Export (Includes Items 5, 10 & 11)	
	91-1364	Timing Mechanism, 9 Station, Export (Includes Items 4–11)	
	91-1365	PCB Assy., 9 Station, Export (Includes Items 5, 10 & 11)	
	89-9395	Timing Mechanism, 12 Station, Export (Includes Items 4–11)	
	91-1367	PCB Assy., 12 Station, Export (Includes Items 5, 10 & 11)	

Vision II - Metal Cabinet



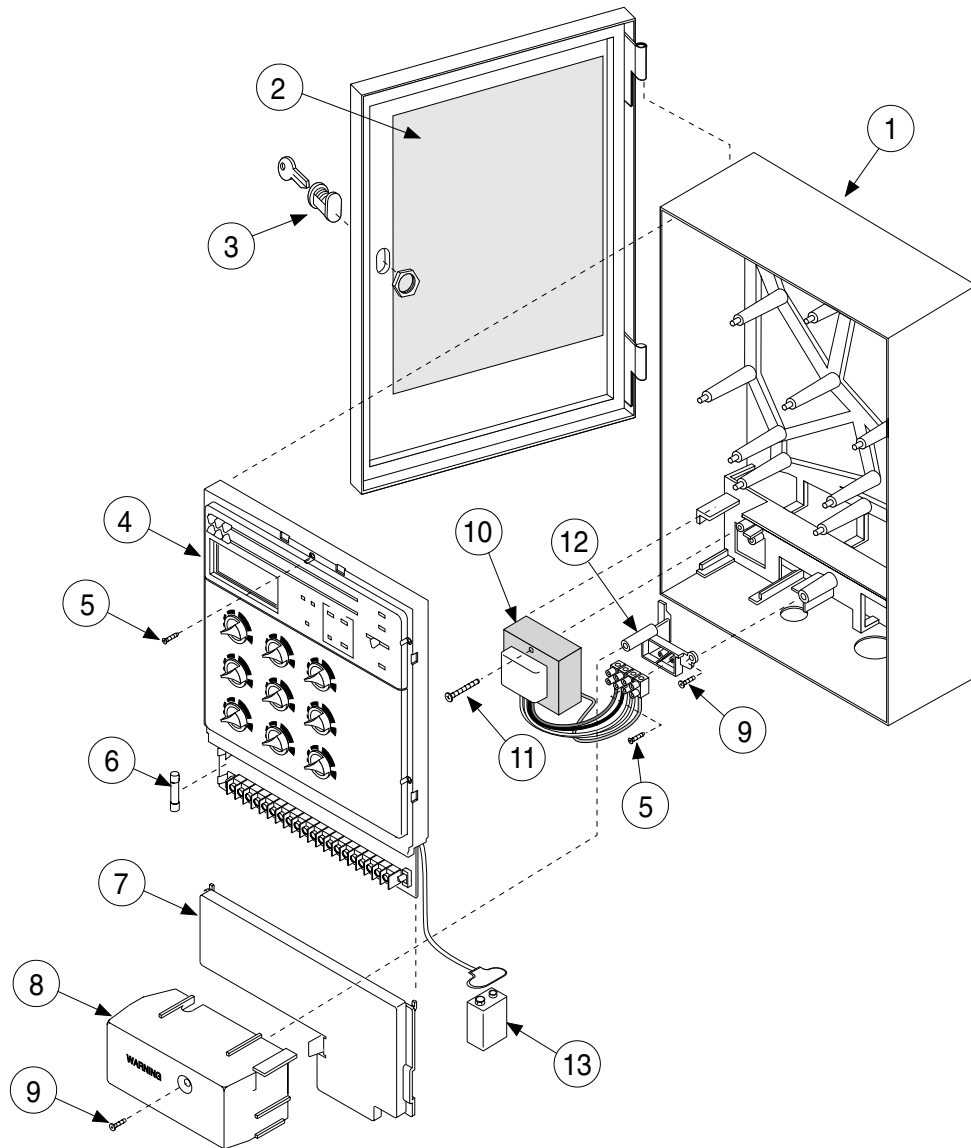
Item No.	Part No.	Description	Quantity Per Assy.
1	91-0803	Cabinet (Includes Door Assy.)	1
2	363-1414	Lock	1
3	363-2789	Key, CH-71	1
4	91-0206	Card, Instruction	1
5	91-0004	Cover, Access	1
6	363-1596	Screw, Tap, #6	2
7	91-0053	Cover, Transformer	1
8	363-1355	Screw, Tap, #6	2
9	35-9951	Transformer, 120 V a.c., 24 V a.c.	1
9	35-9957	Transformer, 220/240 V a.c., 24 V a.c. (Export Models Only)	1
10	363-5052	Screw, 4-24 x 11/16"	5
11	91-0971	Plate, Front, 6 Station, Domestic	1
11	35-9499	Plate, Front, 6 Station, Export	1
11	91-1009	Plate, Front, 9 Station, Domestic	1
11	35-9510	Plate, Front, 9 Station, Export	1
11	91-0969	Plate, Front, 12 Station, Domestic	1
11	35-9519	Plate, Front, 12 Station, Export	1
12	89-0410	Knob, Slide Pot.	6
13	91-0056	Knob, Slide Pot.	1
14	91-0054	Knob, Station (One Per Station)	
15	-----	PCB Assy. (See Service Items)	1
16	363-1355	Screw, Tap #6	4
17	360-0749	Fuse, 1-1/2 Amp	1
18	363-5026	Fuse, 3/4 Amp	1
19	1-3076	Screw, 6-32 x 3/8"	1
20	360-0151	Nut, 6-32	1
		SERVICE PARTS AND ASSEMBLIES	
	363-5078	Strip, Barrier, 4 P, Input Power, Export	
	89-7050	Kit, Accessory, Vision II	
	89-9393	Timing Mechanism, 6 Station (Includes Items 15-22)	
	89-9394	Timing Mechanism, 9 Station (Includes Items 15-22)	
	89-9395	Timing Mechanism, 12 Station (Includes Items 15-22)	
	91-1362	Timing Mechanism, 6 Station, Export (Includes Items 15-22)	
	91-1364	Timing Mechanism, 9 Station, Export (Includes Items 15-22)	
	89-9395	Timing Mechanism, 12 Station, Export (Includes Items 15-22)	
	91-1363	PCB, 6 Station, Export (Includes Item 15, 17 & 18)	
	91-1365	PCB, 9 Station, Export (Includes Item 15, 17 & 18)	
	91-1367	PCB, 12 Station, Export (Includes Item 15, 17 & 18)	

Vision II Plus - Plastic Cabinet



Item No.	Part No.	Description	Quantity Per Assy.
1	89-8804	Housing	1
2	89-8802	Cover	1
3	89-8997	Quick Reference Guide Decal (English)	1
4	89-9393	Timing Mechanism Assy., 6-station	1
4	89-9394	Timing Mechanism Assy., 9-station	1
4	89-9395	Timing Mechanism Assy., 12-station	1
5	360-0749	Fuse, 1.5A, Fast-Blow	1
6	89-8500	Cover, Terminal	1
7	89-8499	Cover, Transformer	1
8	363-1687	Screw, Tap #8 x 0.5"	2
9	89-8621	Transformer Assy.	1
10	363-3195	Screw, Tap, #6 x 1.5"	1
11	363-5052	Screw, Tap, #4 x 0.56"	2
12	35-8576	AC Terminal Bracket	1
13	35-9955	Transformer, External (Plug-in models only)	1
14	91-0188	Cable, Power Interconnect (Plug-In models only)	1
15	363-3581	Battery, 9V, Ni-Cd	1

Vision II Plus — Metal Cabinet



Item No.	Part No.	Description	Quantity Per Assy.
1	91-0803	Housing	1
2	-----	Quick Reference Guide Decal (English)	1
3	363-1414	Lock w/Key	1
4	89-9393	Timing Mechanism Assy., 6-station	1
4	89-9394	Timing Mechanism Assy., 9-station	1
4	89-9395	Timing Mechanism Assy., 12-station	1
5	363-5052	Screw, Tap, #4 x 0.56"	2
6	363-0749	Fuse, 1.5A, Fast-Blow	1
7	89-8523	Cover, Terminal, Metal	1
8	89-8499	Cover, Transformer	1
9	363-1687	Screw, Tap #8 x 0.5"	2
10	89-8621	Transformer Assy.	1
11	363-3195	Screw, Tap, #6 x 1.5"	1
12	-----	AC Terminal Bracket	1
13	363-3793	Battery, 9V, Rechargeable	1