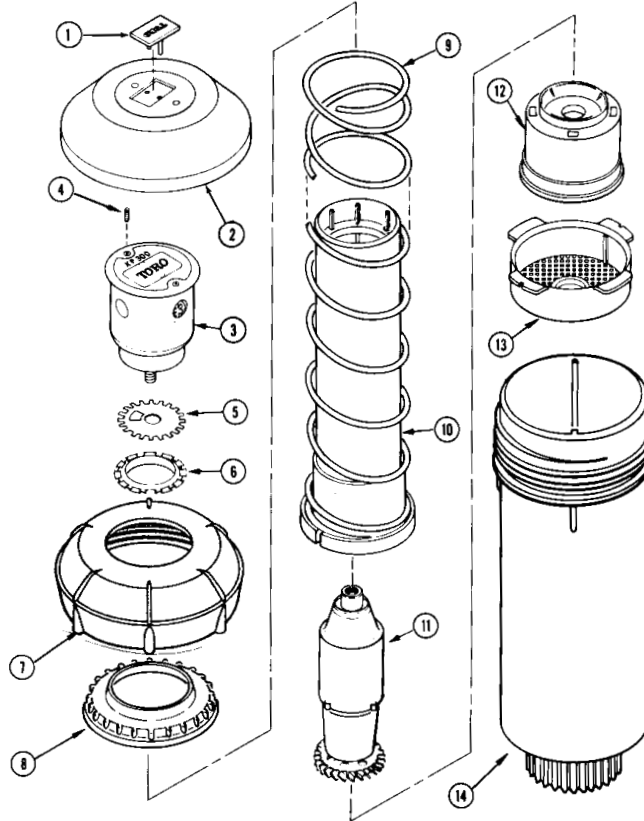
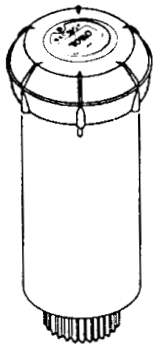
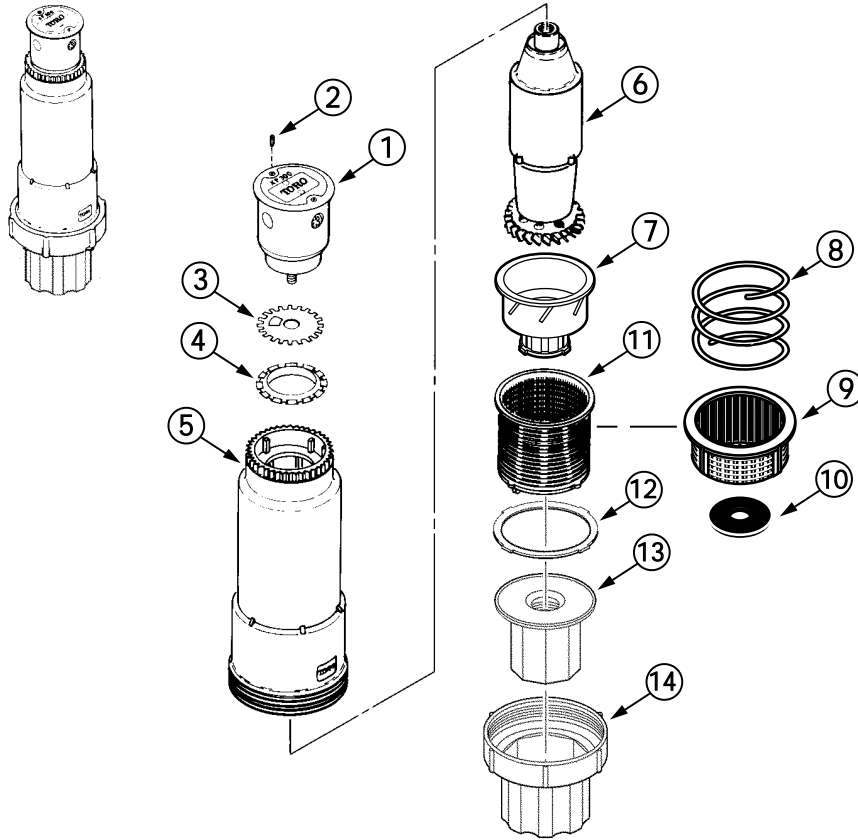


XP-300 Lawn



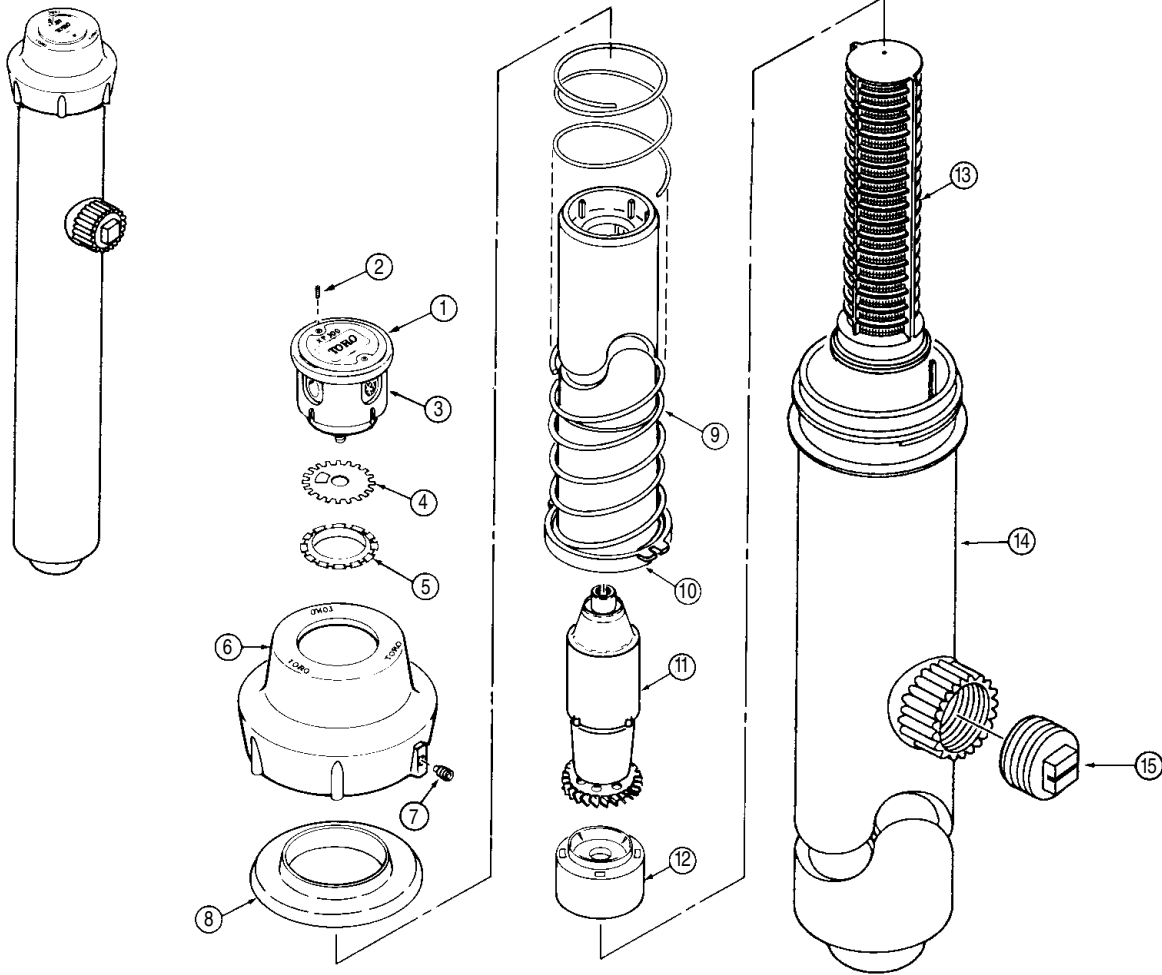
Item No.	Part No.	Description	Quantity Per Assy.
1	-----	Plug, Retainer	1
2	-----	Cover, Rubber	1
3	35-5460	Nozzle Assy., 5.0 GPM	1
3	*XP300-02	Nozzle Assy., 7.0 GPM	1
3	*XP300-03	Nozzle Assy., 9.0 GPM	1
3	*XP300-04	Nozzle Assy., 10.0 GPM	1
4	360-0223	Screw, Set, Half-dog Point	2
5	*XP304-00	Disc, Arc, 90°	1
5	*XP305-00	Disc, Arc, 115°	1
5	*XP306-00	Disc, Arc, 140°	1
5	*XP307-00	Disc, Arc, 165°	1
5	*XP308-00	Disc, Arc, 180°	1
5	*XP309-00	Disc, Arc, 195°	1
5	*XP310-00	Disc, Arc, 210°	1
5	*XP311-00	Disc, Arc, 225°	1
5	*XP312-00	Disc, Arc, 250°	1
5	*XP313-00	Disc, Arc, 270°	1
5	*XP314-00	Disc, Arc, 360°	1
6	35-2137	Seal	1
7	9-4394	Cap	1
8	9-4449	Seal, Riser	1
9	9-2137	Spring, Retraction	1
10	35-2138	Riser	1
11	35-8580	Drive Assy.	1
12	35-2858	Stator Assy.	1
13	35-2136	Screen, Basket	1
14	9-1661	Body	1
		SERVICE PARTS AND ASSEMBLIES	
	600-01	Kit, Rubber Cover (Includes Items 1 and 2)	1
		* Order Through Finished Goods Distribution System—Minneapolis	

XP-300 Shrub



Item No.	Part No.	Description	Quantity Per Assy.
1	35-5460	Nozzle Assy., 5.0 GPM	1
1	*XP300-02	Nozzle Assy., 7.0 GPM	1
1	*XP300-03	Nozzle Assy., 9.0 GPM	1
1	*XP300-04	Nozzle Assy., 10.0 GPM	1
2	360-0223	Screw, Set, Half-dog Point	2
3	*XP304-00	Disc, Arc, 90°	1
3	*XP305-00	Disc, Arc, 115°	1
3	*XP306-00	Disc, Arc, 140°	1
3	*XP307-00	Disc, Arc, 165°	1
3	*XP308-00	Disc, Arc, 180°	1
3	*XP309-00	Disc, Arc, 195°	1
3	*XP310-00	Disc, Arc, 210°	1
3	*XP311-00	Disc, Arc, 225°	1
3	*XP312-00	Disc, Arc, 250°	1
3	*XP313-00	Disc, Arc, 270°	1
3	*XP314-00	Disc, Arc, 360°	1
4	35-2137	Seal	1
5	35-2187	Body, Shrub	1
6	35-8580	Drive Assy.	1
7	35-2859	Stator Assy.	1
8	102-0579	Spring, COM	1
9	102-0575	Screen, Basket, COM	1
10	89-7561	Seal, COM	1
11	9-5212	Screen, Basket	1
12	9-5211	Seal	1
13	89-6094	Threaded Insert, 3/4" & 1/2"	1
13	102-0577	Threaded Insert, 3/4" & 1/2", COM	1
14	89-8305	Base, Shrub	1
		SERVICE PARTS AND ASSEMBLIES	
	9-5209	Base, Shrub (Pre-10/97)	1
	9-5698	Insert, 1/2"	1
	9-5699	Insert, 3/4"	1
		* Order Through Finished Goods Distribution System—Minneapolis	

XP-300 High-pop



Item No.	Part No.	Description	Quantity Per Assy.
1	*XP312-02	Nozzle Assy., with sleeve, 7.0 (Includes Items 2 and 3)	1
1	*XP312-03	Nozzle Assy., with sleeve, 9.0 (Includes Items 2 and 3)	1
1	*XP312-04	Nozzle Assy., with sleeve, 10.0 (Includes Items 2 and 3)	1
2	360-0223	Screw, Set, Half-dog Point	1
3	35-2249	Sleeve, Nozzle	1
4	*XP304-00	Disc, Arc, 90°	1
4	*XP305-00	Disc, Arc, 115°	1
4	*XP306-00	Disc, Arc, 140°	1
4	*XP307-00	Disc, Arc, 165°	1
4	*XP308-00	Disc, Arc, 180°	1
4	*XP309-00	Disc, Arc, 195°	1
4	*XP310-00	Disc, Arc, 210°	1
4	*XP311-00	Disc, Arc, 225°	1
4	*XP312-00	Disc, Arc, 250°	1
4	*XP313-00	Disc, Arc, 270°	1
4	*XP314-00	Disc, Arc, 360°	1
5	35-2137	Seal	1
6	35-4515	Cap, Locking w/Set Screw	1
7	360-0223	Screw, Set, Half-dog Point	1
8	35-3630	Seal, Riser	1
9	35-7579	Spring, Retraction	1
10	35-2247	Riser	1
11	35-8580	Drive Assy.	1
12	35-3822	Stator Assy.	1
13	9-4571	Screen, Basket	1
14	89-1960	Body w/Side Inlet	1
15	363-3779	Plug, 3/4" NPT Male	1

* Order Through Finished Goods Distribution System—Minneapolis